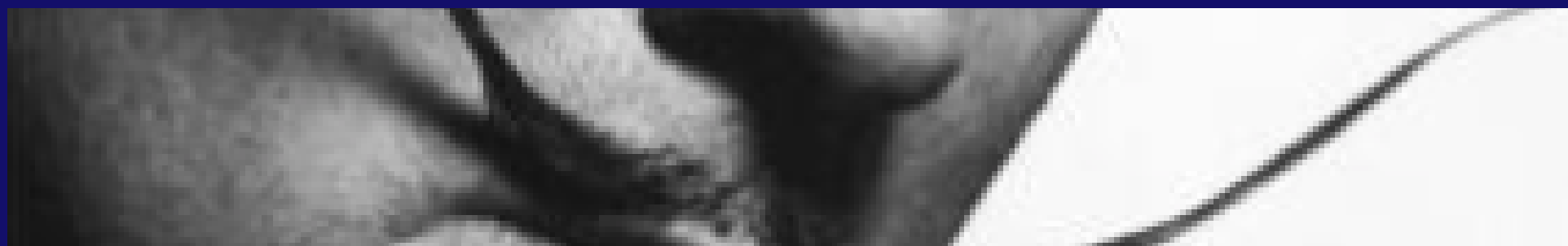




SALVADOR DALI



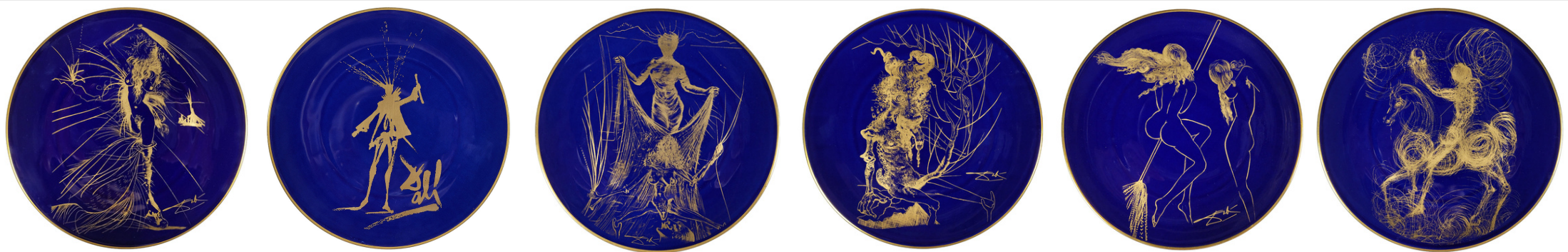
LIMOGES PLATE COLLECTION



Dali & Raynaud & Co.

In 1959, Dali began his relationship with publisher Pierre Argillet, creating almost 200 of Dali's most recognizable etchings. The Pierre Argillet Collection demonstrates high standards of quality, and the impassioned partnership between an artist and his publisher. In 1968, they worked on a fabulous collaboration with one of the world's oldest and most respected porcelain artisans, Raynaud & Co. A selection of seven images, from the acclaimed Argillet collection were chosen to create this stunning group of limited-edition Limoges porcelain plates. This rare collection is from a small numbered edition of only 2000. Each plate includes a numbered plaque that acts as proof of authenticity.

The seven images that were chosen as the featured imagery on these beautiful porcelain plates, were part of suites created in 1968. That is the same year as this porcelain collaboration. The collection was done in the famous *Bleu de Sevres*, as it is referred to by the French Porcelain Society. There are very few official celebrated colors, *Bleu de Sevres* being the most well know. It is created using ground cobalt mixed with metallic oxides to achieve the radiant blue of the porcelain. The blue's depth is accented by the delicate gold that brings Dali's etchings to life on each plate.



SALVADOR DALI - RAYNAUD & CO. COLLECTION

F a u s t

Faust is one of the most well-known narratives in history, *Faust* is based on a real-life astrologer and alchemist in northern Germany in the fifteenth century. The story of Doctor Faust is a cautionary tale. *Faust* has struck a chord with generation after generation, and is an allegory used time and time again. Dali's suite entitled "Faust", is his interpretation, just one of hundreds, if not thousands, of artists, authors and directors to have portrayed their own version of the story of Doctor Faust. This plate's image of "Faust" is so strong with a bold use of gold and the large Dali signature.



G r e t c h e n

"Gretchen" is a prominent character in Goethe's *Faust*. The only individual plate in the collection and its beauty is unparalleled. The incredible shading and cross-hatching, the soft blue and the very intentional placement of the gold highlight the beauty and strong features of "Gretchen". Gretchen is also known in some tellings as Marguerite. The details are very Dali-esque, her elaborate jewels and clothing are both abstract as well and incredibly intentional.



K n i g h t & D e a t h

"Knight and Death" is an image from the *Faust* suite. This imagery is a wonderful combination of the drama and elegance. It is also a wonderful example of Dali's homage to Picasso and Leonardo Da Vinci in the style in which he depicts the horse.



Witches with Broom

"Witches with Broom" is an image from the *Faust* suite. This imagery is a striking combination of light and dark. It is a wonderful example of the detail and mastery in both the strong lines as well and the soft details in their flowing hair.



W o m a n H o l d i n g V e i l

Venus in Furs was a novel written by Austrian author, Leopold von Sacher-Masoch. Needless to say, this was an intriguing subject matter for Dali. The *Venus in Furs* suite is a powerful body of work, where Dali's mischievous nature found a literary work that allowed his imagination to go wild. "Woman Holding Veil", depicts several of Dali's most recognizable elements, such as the coastline in the distance, the directional lines leading the eye and creating depth as well as the famous crutch, symbolizing support.



W o m a n w i t h W h i p

"Woman with Whip" is similar to the other plates of this collection in that it holds several of Dali's most recognizable elements. The reemergence of the Costa Brava coastline in the distance and the directional lines leading the eye and creating depth. It also seems to have another small scene to the right of the primary figure, which Dali often included in his work.



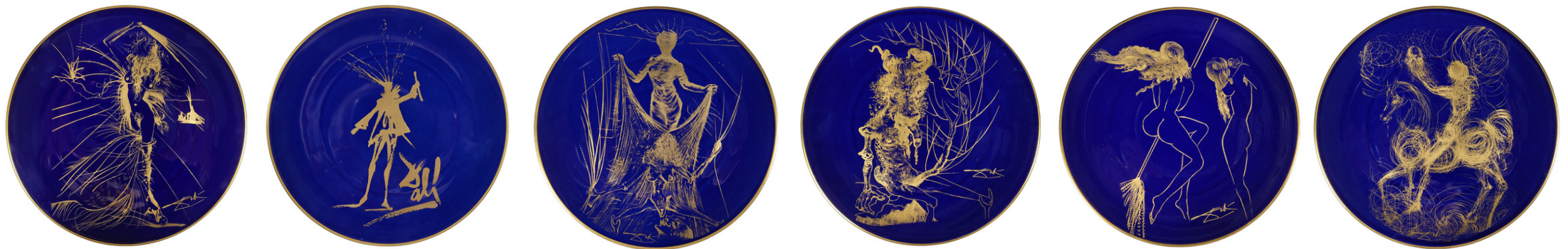
Golden Veal

Another image from the *Venus in Furs* suite, "Golden Veal" depicts several of Dali's most recognizable elements. It also includes the coastline but instead of having it in the distance it is acting as a seat for the main character. It is also shaded with incredible cross-hatching. Dali is known for several symbolic elements that appear time and time again in his work, including the crutch, symbolizing physical and emotional support. Along with these common themes he was able to let the subject matter of *Venus in Furs* encourage Dali's imagination.



Salvador Dali

Salvador Dali was one of the most influential artists of the 20th century. After passing through phases of Cubism, Futurism and Metaphysical painting, he joined the Surrealists in 1929. He took over the Surrealist theory of automatism but transformed it into a more positive method which he named 'critical paranoia'. Dali's artistic career spanned decades, he was a painter, sculptor, and graphic artist, as well experimenting in countless other mediums throughout his lifetime. Like many other of Dali's artistic peers he explored countless avenues to express his creativity. This collaboration with Raynaud & Co. is just another fabulous example of bringing fine art into the home in a very accessible way.



SALVADOR DALI - RAYNAUD & CO. COLLECTION

SALVADOR DALI - RAYNAUD & CO. COLLECTION